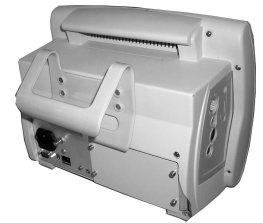


GCX Mounting Assembly Installation Guide

Philips C3 Monitor Bed Rail Hanger

The purpose of this guide is to describe attachment of the Bed Rail Hanger to the C3 Monitor.



Parts Reference

The following parts and hardware are included with this installation kit (see photo for part; hardware not shown):

Item #	Description	Qty
1	C3 Bed Rail Hanger	1
2	M4 x 20mm Flat Head Socket Cap Screw (FHSCS)	4
3	Finishing Washer, Nylon	4
4	Insulating Bushing, Nylon	4
5	3/8" x 3/16" x .06" Flat Washer, Nylon	4
6	2.5mm Hex Key	1



C3 Hanger

Tools Required: 2.5mm hex key (provided).

Attaching C3 Bed Rail Hanger

