

### Installation Guide

Philips MP2/X2 IntelliVue M Series Arm (8"/20.3cm) Wall Mount  
(Refer to qualified personnel)

The purpose of this guide is to:

1. Describe mounting of MP2/X2 directly to arm (page2).
2. Describe mounting of MP2/X2 equipment on Mounting Bracket (page 2, 3).
3. Describe mounting of Arm in channel (page 3).

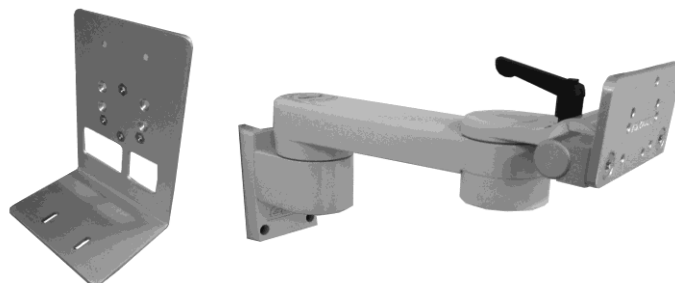


**Installation Note:** Docking Station supplied by Philips.

### Parts Reference

The following parts and hardware are included with this installation kit (hardware not shown):

Item #	Description	Qty
1	M Series Arm (8")	1
2	Mounting Bracket	1
3	M4 x 14mm Flat Head Machine Screws (FHMS)	2
4	M4 x 10mm Pan Head Machine Screw (PHMS)	2
5	M4 x 8mm Flat Head Machine Screw (FHMS)	2
6	M4 x 16mm Flat Head Machine Screw (FHMS)	2
7	1/8" Hex Wrench	1
8	5/32" Hex Wrench	1



### Tools Required

- Phillips screwdriver (not provided)
- 5/32" (provided)
- 1/8" hex wrench (provided)

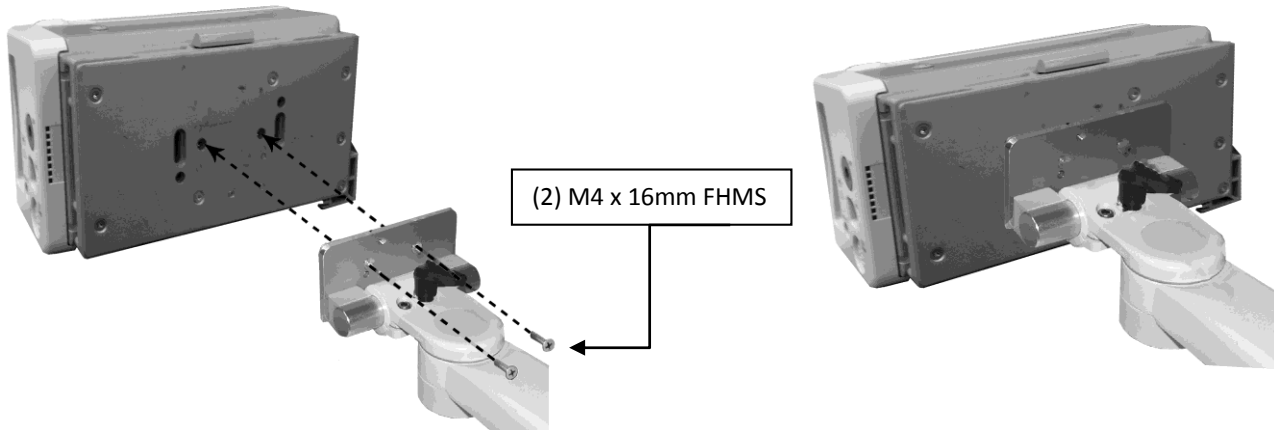


#### CAUTION - Before mounting the Arm:

- Ensure that the weight of the device being mounted does not exceed the load rating of your M Series Arm. Check the "Max Load" rating label located on top of the arm at the Slide pivot point. It is not recommended that this arm be used for weights outside of this range.
- If assistance is needed regarding an application, please contact a GCX product specialist at (800) 228-2555.

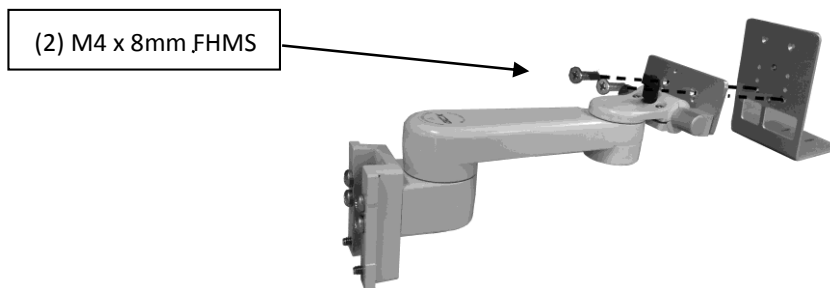
### Mounting Philips MP2 directly on Arm without the Power Supply.

1. Insert two (2) M4 x 16mm FHMS and using a phillips screwdriver tighten as shown

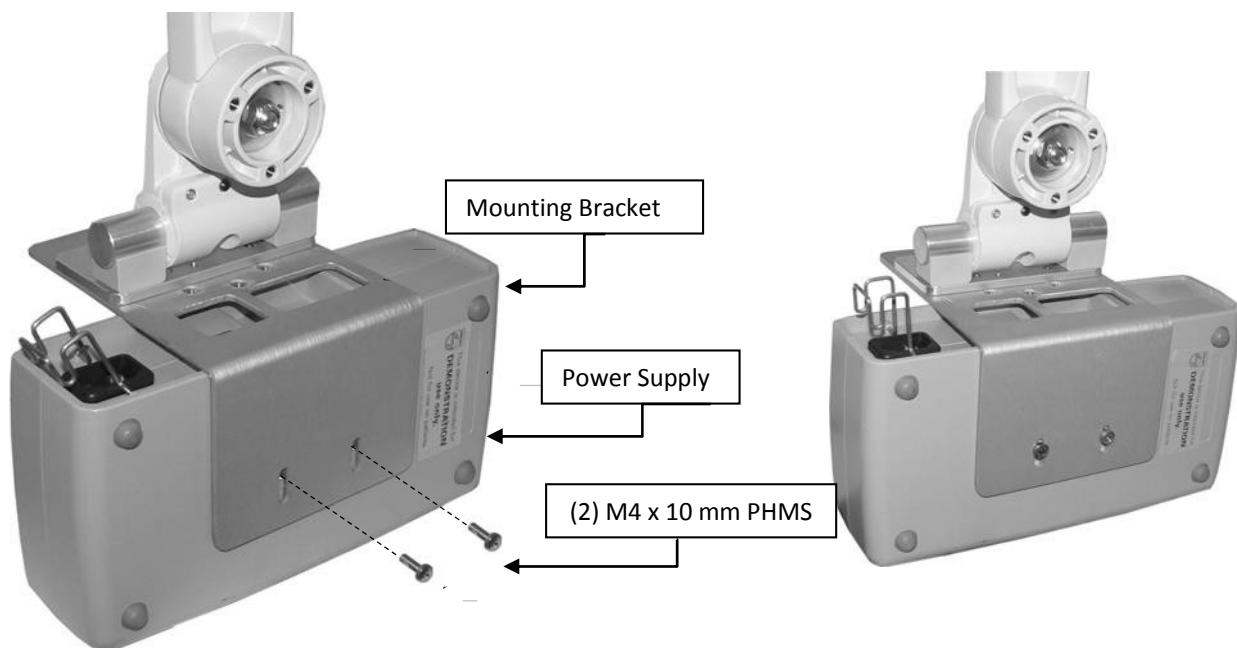


### Mounting Power Supply and Docking Station (supplied by Philips) on the Mounting Bracket

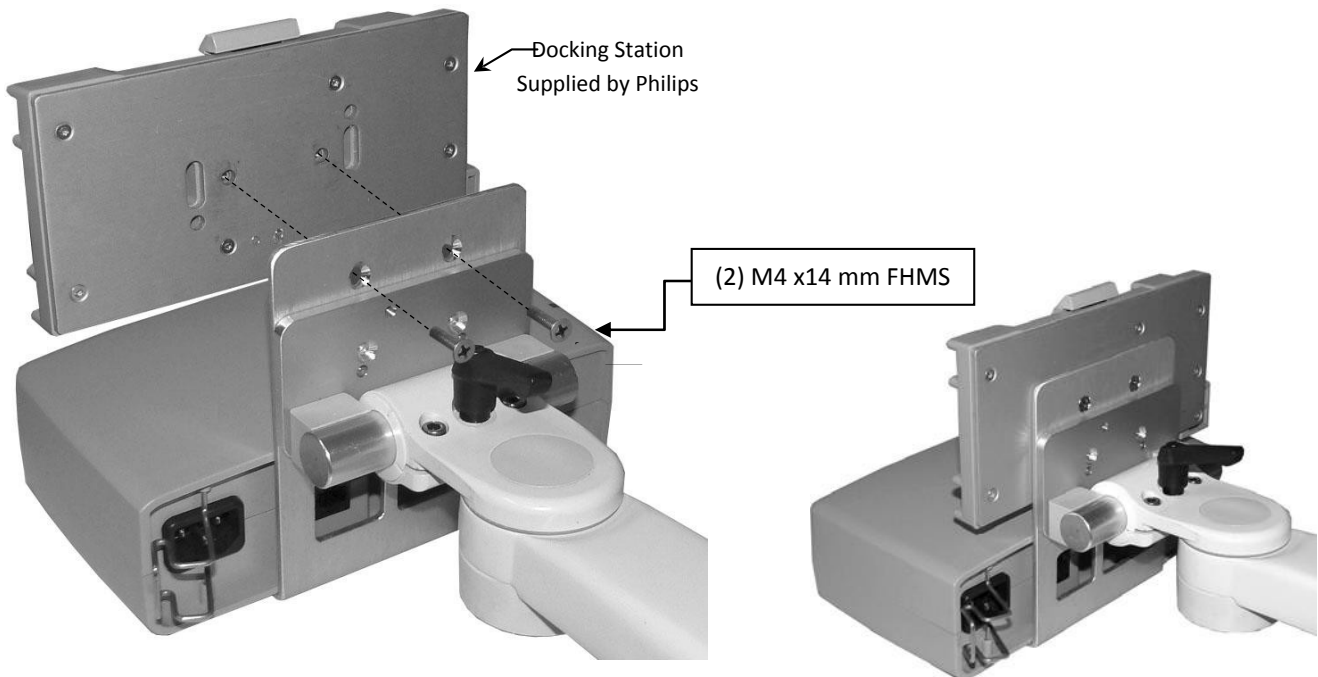
1. Using a phillips screwdriver unscrew the two (2) M4 x 8mm FHMS to remove L-Bracket.



2. Fasten power supply to the bottom of Mounting Bracket with two (2) M4 x 10 mm PHMS as shown below.

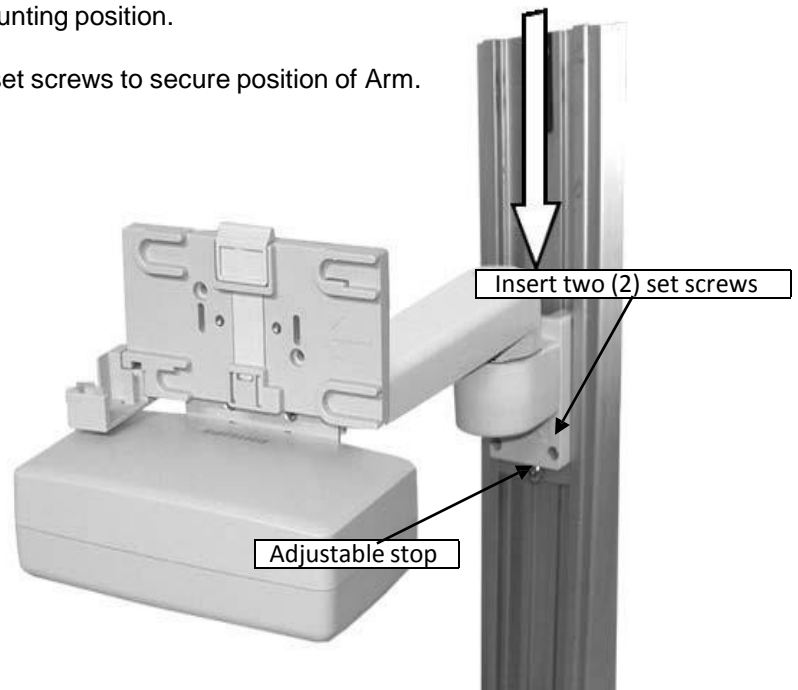


2. Fasten docking station to upper Mounting Bracket with two (2) M4 x 14 mm FHMS as shown below. If the power supply and Mounting Bracket will not be used, the Docking Station may be fastened directly to the arm using two (2) M4 x 16mm FHMS.



### Installing Arm in Channel

1. Insert Adjustable Stop in channel and guide to desired mounting position. Using a phillips screwdriver, tighten center screw to secure position of Adjustable Stop.
2. Insert Slide (rear of Arm) in channel and guide to mounting position.
3. Using the 1/8" hex wrench provided, tighten two (2) set screws to secure position of Arm.



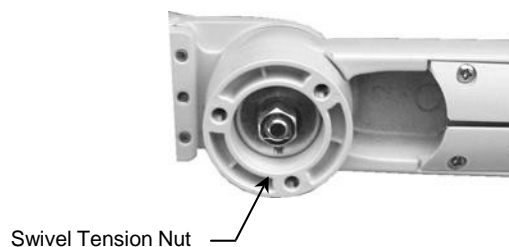
## M Series Arm Operation and Adjustment

### Swivel and Swivel Tension

1. To swivel the mounted instrument simply push or pull the corners of the instrument.
2. To adjust swivel tension, tighten or loosen the Swivel Tension Nut using a 1/2" [13 mm] socket wrench or nut driver.



**Warning: Swivel tension nut must be torqued to a minimum of 20 in-lbs [2.3 N-m].**

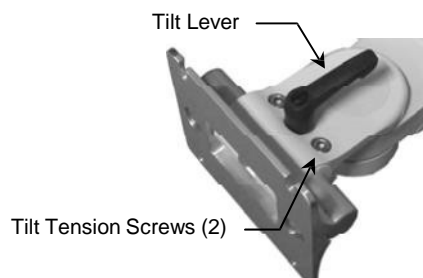


### Tilt and Tilt Tension

1. To tilt the instrument, grasp top and bottom of the instrument and tilt it to desired angle. Tilt position may be locked with the Tilt Lever.
2. To adjust tilt tension, equally tighten or loosen two (2) Tilt Tension screws with the 5/32" hex wrench provided.

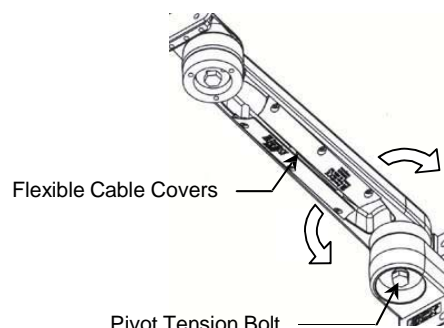


**Warning: Tilt tension screws must be torqued to a minimum of 35 in-lbs [4.0 N-m].**



### Pivot and Pivot Tension

1. To pivot the Arm at the Slide, simply push on the side of the Arm or mounted instrument.
2. To adjust pivot tension, loosen or tighten the Pivot Tension Bolt using a 1/2" [13 mm] socket driver.



### Cable Management

An open cavity beneath the arm (with flexible cable covers) allows management of cables between the front and rear of the arm.

### Periodic Maintenance

All fasteners associated with the mounting system should be inspected periodically and tightened or adjusted as necessary for optimal operation and safety.

### Cleaning the Mounting Assembly

1. The mounting assembly may be cleaned with most mild, non-abrasive solutions commonly used in the hospital environment (e.g. diluted bleach, ammonia, or alcohol solutions).
2. The surface finish will be permanently damaged by strong chemicals and solvents such as acetone or trichloroethylene.
3. Steel wool or other abrasive material should never be used.
4. Damage caused by the use of unapproved substances or processes will not be warranted. We recommend testing of any cleaning solution on a small area of the arm that is not visible to verify compatibility.
5. Never submerge or allow liquids to enter the arm. Wipe any cleaning agents off the arm immediately using a water-dampened cloth. Dry mounting assembly thoroughly after cleaning.

**CAUTION:** GCX makes no claims regarding the efficacy of the listed chemicals or processes as a means for controlling infection. Consult your hospital's infection control officer or epidemiologist. To clean or sterilize mounted devices or accessory equipment, refer to the specific instructions delivered with those products.