

Installation Guide

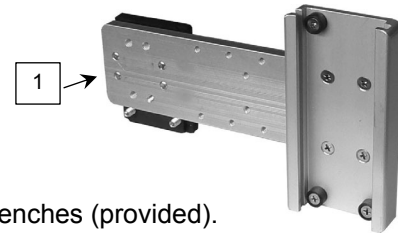
Offset Channel Extension

The purpose of this guide is to describe mounting and modification of the Offset Channel.

Parts Reference

The following parts and hardware are included with this installation kit (major components identified by photo):

Item #	Description	Qty
1	Offset Channel Extension Assembly	1
2	1/8" Hex Wrench	1
3	5/32" Hex Wrench	1



Tools Required: Phillips screwdriver (not provided), 1/8" and 5/32" hex wrenches (provided).

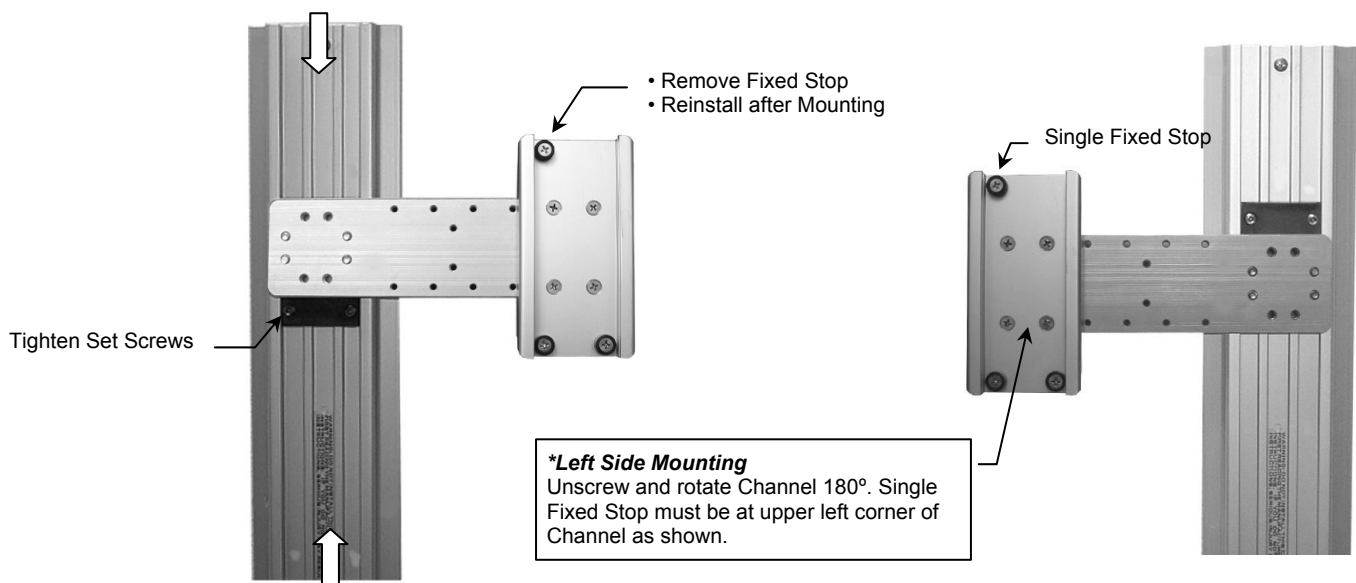


CAUTION: This Mount is not recommended for mounting VHM Arms or articulating Arms. Please contact GCX customer service if you have any questions about the use of the Offset Channel Extension.

Mounting Channel Extension on Right or *Left Side of Existing Channel

Installation Note: The Offset Channel Extension is configured at the factory for 6" offset to right of existing channel as shown in *Parts Reference* above. Left side mounting is shown below. Optional mounting configurations are shown on page 2.

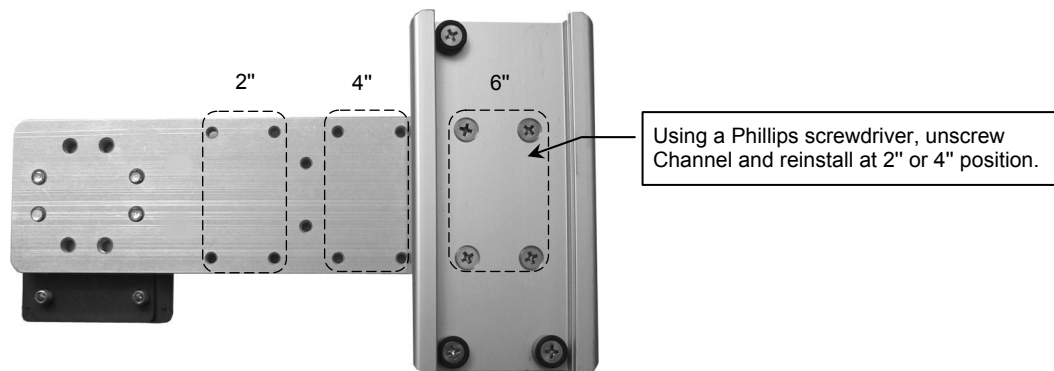
1. Insert Slide in opening at top or bottom of Channel and move Extension to desired mounting position. Using the 1/8" hex wrench provided, tighten the two (2) set screws in the Slide. **Installation Note:** If Slide does not move easily in Channel, see *"Easing Movement of Slide in Channel"* on page 3.
2. Using a Phillips screwdriver, remove Fixed Stop at the top of the Channel Extension.
CAUTION: Fixed Stop must be reinstalled after Arm or Mount has been installed in Channel. The Fixed Stop prevents Arm or Mount from inadvertently being dislodged from Channel.



Changing the Position of the Channel on the Extension

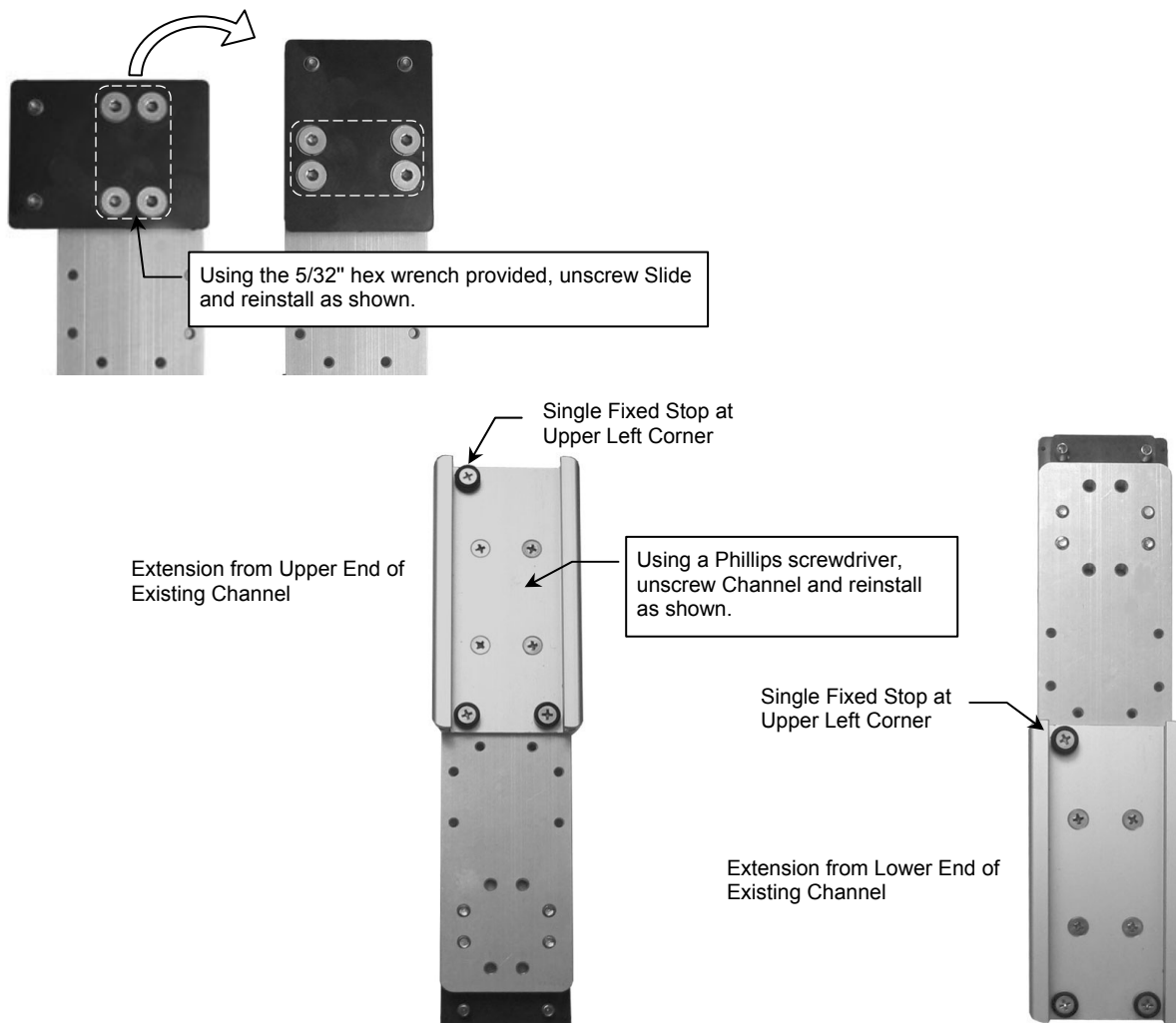
2" or 4" Offset

The Channel may be repositioned from 6" offset to a 2" or 4" offset from the existing channel as described below.



Rotating the Channel and Slide for Vertical Extension from Existing Channel

Remove and reinstall Slide and Channel as shown below and mount in existing channel as described on page 1.

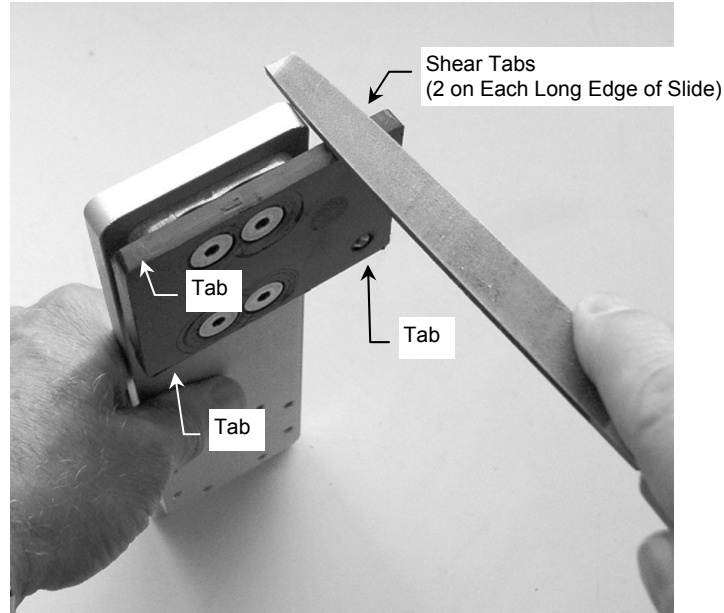


Easing Movement of Slide in Channel

If the Arm does not slide easily in the channel, two (2) small shear tabs on each long edge of the Slide may be filed down slightly.

CAUTION: File a very small amount at a time. Removal of too much material will result in a loose fit in the Channel and poor operation.

1. Using a double-cut 8" metal file (or similar), file each shear tab one (1) to three (3) laps.



Routine Maintenance

Periodically inspect all fasteners associated with the mounting system. Tighten as necessary for optimal operation and safety.

Cleaning the Mounting Assembly

1. The mounting assembly may be cleaned with most mild, non-abrasive solutions commonly used in the hospital environment (e.g. diluted bleach, ammonia, or alcohol solutions).
2. The surface finish will be permanently damaged by strong chemicals and solvents such as acetone and trichloroethylene.
3. Do not use steel wool or other abrasive material to clean the mounting assembly.
4. Damage caused by the use of unapproved substances or processes will not be covered by warranty. We recommended that you test any cleaning solution on a small area of the mounting assembly that is not visible to verify compatibility.
5. Never submerge the roll stand or allow liquids to enter the mounting assemblies. Wipe any cleaning agents off the mounting assembly immediately using a water-dampened cloth. Dry all mounting assemblies thoroughly after cleaning.

CAUTION: GCX makes no claims regarding the efficacy of the listed chemicals or processes as a means for controlling infection. Consult your hospital's infection control officer or epidemiologist. To clean or sterilize mounted instruments or accessory equipment, refer to the specific instructions delivered with those products.