

PRC™ Post Rail Clamp

PRC-0001-01

Versatile Clamping Solution for Small Devices

The PRC™ is ideal for mounting to a post or a 10 x 25mm rail - one clamp works for both applications. The compact, durable design provides the performance expected from a GCX product. A device can be interfaced directly to the clamp, or an adapter plate can be designed to ensure compatibility.

SPECIFICATIONS

Post Grip Range: .75" - 1.50" (19 mm - 39 mm)

Rail Grip Range: 10 mm x 25 mm

Interface Options:

- 2X M4 thru holes 1.455" (37 mm) hole centers
- 4X 10-32 tapped holes 1.6" x 1.6" (40.6 mm x 40.6 mm) diamond pattern

Duty Rating: 30 lbs / 13.6 kg

Materials:

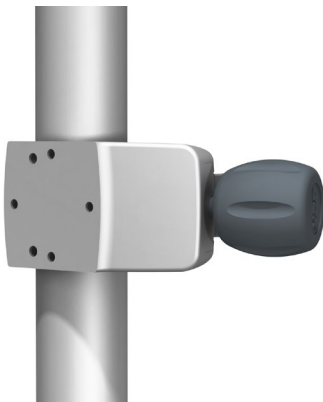
- Die cast aluminum
- Stainless steel
- Injection molded santoprene

Finish: Clear E Coating - withstands hospital cleaning solutions

Dimensions: 5.13" L x 2" W x 2.5" D (13 cm x 5.1 cm x 6.4 cm)

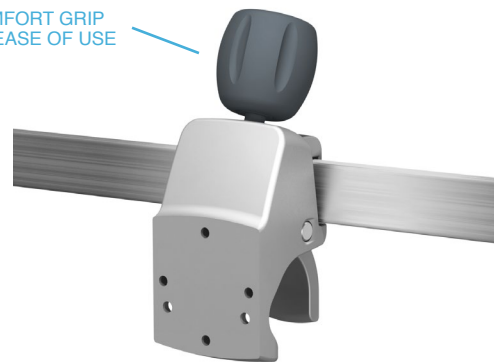


DEVICES CAN INTERFACE DIRECTLY TO THE PRC OR VIA ADAPTER PLATE



PRC INSTALLED ON A POST

COMFORT GRIP FOR EASE OF USE



PRC INSTALLED ON A 10 X 25 MM RAIL